

Hi... Hello... Welcome...

Oasis academy
:enfield

Oasis Academy Enfield
Kinetic Crescent, Innova Park,
Mollison Avenue, Enfield EN3 7XH
www.oasisacademyenfield.org





Oasis academy :enfield

If you have a query regarding Oasis Academy Enfield please contact John Walton through his PA, on **01922 655 400** or admin@oasisenfield.org

You can keep up-to-date with developments at Oasis Academy Enfield via our website www.oasisacademyenfield.org

Oasis :community learning

If you wish to know more about **Oasis Community Learning** please contact:

75 Westminster Bridge Road, London SE1 7HS

Email: ocl@oasisuk.org www.oasiscommunitylearning.org

Registered number: 5398529. Charity Number: 1109288

Oasis for people & community

Should you want to find out about **Oasis UK** you can visit www.oasisuk.org

Certified as a FSC mixed sources product, produced with recycled fibre from both pre- and post-consumer sources, together with FSC certified virgin fibre from well managed forests.



Oasis Community Learning

Building Community – Developing People

When I was a teenager I used to attend a local church-based youth club at the weekends. There I learnt two important lessons in life. The first was that the 15-year-old girl that I started going there in an attempt to woo into becoming my girlfriend wasn't the least bit interested. To her I was a non-entity – a mere 14-year-old! But the second was that I am made in the image of God and that as a result, my life, just like each life, has purpose and meaning. In short, I learnt that every person matters.

So it was that I became inspired to create ways to help build communities where everyone – both young and old – had hope, felt they mattered and were given the opportunity to achieve to their full potential. As a result, in 1985 I set up Oasis, a charity which now provides education, housing and healthcare around the world.

Oasis Community Learning, part of what was by then a family of Oasis charities, began its life in 2004 with the goal of developing a number of Academies across the UK. And, just like the rest of Oasis' work around the world, right at its heart are the same values. Inspired by Christ, we are committed to valuing all, protecting rights to freedom and choice, working against discrimination and exclusion, respecting the beliefs of others and nurturing confident and competent young people.

That's why Oasis Academy Enfield's purpose is to provide a rich and balanced educational environment – academically, vocationally, socially, morally, spiritually, emotionally and environmentally for all our students.

That's why we aim to develop informed and active learners who can explore questions, seek answers and solve problems – students who will care passionately about their neighbour, their community and their planet.

That's why, through high-quality facilities, outstanding staff and clear leadership, we work to create a positive and affirming environment, encouraging partnerships between students, parents/carers and the wider local community.

That's why Oasis Academy Enfield's goal is to provide a welcoming environment for students of all faiths and none, as well as for their parents and carers.

Steve Chalke MBE – CEO, Oasis Community Learning

“Education is not the filling of a pail, but the lighting of a fire.”

W.B. Yeats

Oasis Academy Enfield

Learning Together – Succeeding Together

Welcome to Oasis Academy Enfield. I was delighted to be appointed Principal in April 2006 and it has been a pleasure working on the development and opening of the Academy since then.

Prior to joining Oasis Community Learning I was the headteacher of a secondary school in Buckinghamshire and before that worked in several schools in North West London. My first teaching job, however, was in Africa, on the beautiful island of Zanzibar. I spent two years teaching with Voluntary Service Overseas, an experience that taught me the impact education can have on young people's lives.

John Walton – Principal



Academies are new, publicly funded, all-ability, independent schools, introduced by the Government in 2000. The majority of funding for the new building and facilities comes directly from central government; which also funds the annual running costs of the Academy. The sponsor raises some of the initial funding to build the Academy and has responsibility for the day-to-day running of the school.

Oasis Academy Enfield is located on the Innova Park site in North East Enfield. Although independent, Oasis Academy Enfield work's closely with the Local Authority, local schools and other organisations for the good of all within the community.

The young people who join the Academy have access to excellent facilities, exciting opportunities and first-class support. They are subject to high expectations and are stretched and challenged in their learning and personal development.

All students are treated as individuals; there is no 'one size fits all' approach. Personalising learning is our aim, giving students the education they need and want. Learning is active, hands on, engaging and fun.

Oasis Academy Enfield is a school for the community and a school for the 21st Century, preparing our young people for their future. We are guided as we grow by our mission, Learning Together - Succeeding Together, our values and our vision. If you wish to be part of this journey, we look forward to working with you.

John Walton - Principal, Oasis Academy Enfield

Our Values

Every child matters

We identify and develop the gifts, talents and interests of all our students. Our curriculum and extended opportunities enable all students to engage in their education. They enjoy learning and achieve success. We help them learn how to be healthy and stay safe. They make positive contributions to their school, their community and the wider world. They develop spiritual, social, physical, emotional and economic well-being. The achievements of all our students are valued.

Education for all

All members of our community are learners. Our students are educated for life. Our staff are developed through teamwork, training and the opportunities that an innovative environment brings. The educational facilities are shared with local schools and local people. We provide lifelong education.

It takes a whole village to educate a child

This African saying reflects the importance of the whole community in educating our children. We employ first-class staff. Support goes beyond the classroom and beyond the Academy gate. Parents, carers and families of our students are expected to be involved in their education. Through our Business & Enterprise specialism we engage local, national and international partners in the education of our students.

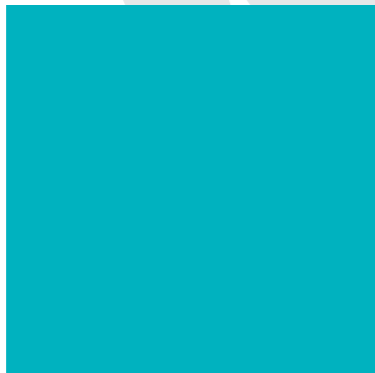
Love your neighbour

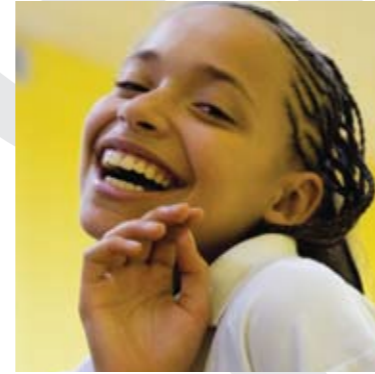
Our work is motivated and inspired by the life, message and example of Christ. We recognise the richness that spiritual and cultural diversity brings to our community. We respect the beliefs and practices of other faiths and provide a welcoming environment for students of all faiths and those with none. We recognise that we are stronger together and value collaboration. We develop an understanding and tolerance of each other through knowledge, mutual respect, believing the best and forgiveness. Individual rights are respected and choice is exercised within a culture of self-discipline.

Our Vision

Oasis Academy Enfield:

- Develops confident, independent, lifelong learners
- Prepares students to lead a good and successful life
- Delivers personalised learning programmes for all
- Is a focus for positive community action
- Provides 21st Century learning opportunities





Learning – Curriculum

Key Stage 3

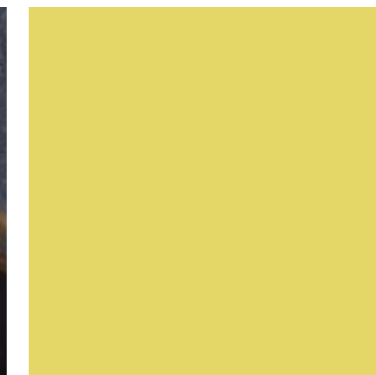
Students follow learning programmes based on National Curriculum schemes of work in English, Maths, Science and ICT. They have access to the humanities, arts, technology, sports and languages through the core curriculum and during our immersion days and optional learning pathways. All students have an opportunity to create their curriculum from the very first day in the Academy via our enrichment 3Es programme.

Key Stage 4

A full complement of GCSEs is supplemented with Specialist Diplomas and BTEC courses. As a Business & Enterprise specialist school the Academy develops excellence in a variety of enterprise-focused subjects. Opportunities also emerge from our on site Healthy Living Centre, Children's Centre and Community Café to develop courses related to these areas. Some students begin GCSE and other level 2 courses in Year 9; others may take three years to complete Key Stage 4.

Key Stage 5

Our planning for the sixth form is at an early stage but we will be offering a wide range of A level courses together with level 3 BTEC and Specialist Diplomas. We will also deliver some level 2 courses within the BTEC and Specialist Diploma family.





Learning – Organisation

All students belong to a Learning Family, a group of no more than 12, supported by a Personal Tutor. The Tutor gets to know the young person's interests, skills, talents and needs. The Tutor works with the student and parents/carers to personalise their learning, helping them choose the right courses and ensuring they develop the skills needed for effective learning. The members of a Learning Family support and guide each other, sharing experiences and knowledge. We especially see strength in students encouraging one another and believe this peer support motivates the students to succeed.

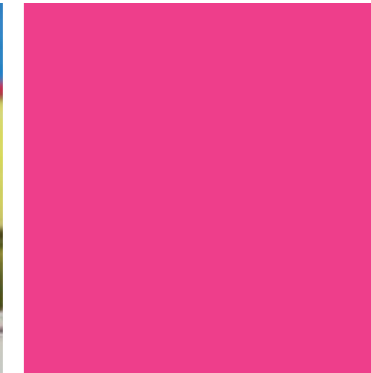
In Years 7 and 8 much of the learning takes place in the Learning Home, a class of 26 students who know each other well. The Learning Home provides a sense of security in the first years of secondary education.

Learning Groups are used to deliver the core subjects at Key Stages 3 and 4 (English, Maths and Science) and option subjects further up the Academy. Students are grouped according to the stage they are at, with targeted teaching and support enabling good progress to be made by all students.

There are 7 Learning Villages in the Academy. These cut across the whole of the age range. They are used to develop peer support and leadership programmes. Competitions, performances and enterprise activities are rooted in the Village system.

Learning Reviews take place throughout the Academy year. Personal Tutors receive information from subject teachers and feed back to students and parents/carers on progress being made. Discussions involving Tutor, student and parents/carers result in Personal Learning Programmes being developed.

By treating students as individuals we ensure they study the subjects that suit their abilities and needs, set appropriate learning targets and develop ambitious and exciting future goals.





Community – Living and learning together

Community Vision
 The vision of the Academy is to create both an outstanding school and a community hub. The new build gives the opportunity to include valuable community facilities. The aim is for local residents to be able to access adult learning programmes, a learning resource centre, a Healthy Living Centre, a gym, sports courts and out-of-hours youth activities.

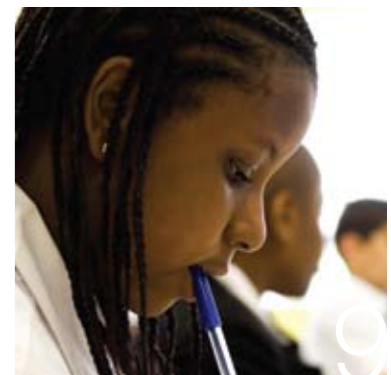
Oasis believes that it has a duty to respect the environment through a commitment to sustainability and bio-diversity. Resources entrusted to Oasis Academy Enfield are used with integrity and responsibility

Healthy Living
 There is an ethos of balanced, healthy lifestyles, demonstrated through policies regarding Academy meals and ecological building design. It is hoped that the Healthy Living Centre will have a multi-disciplinary GP practice, offer primary care as well as links to community activities such as: nutrition and fitness courses, walking clubs, social clubs, art classes etc.

We want to enable the creative use of nurses and health care assistants to deliver things like diabetes management, coronary care, cholesterol checks and a range of other services.

We wish to develop a Community Café as part of the Healthy Living Centre, where healthy food will be served and opportunities for social interaction provided.

Children's Centre
 The Children's Centre is part of our vision for extended community use on the Academy site. It currently operates out of the Academy premises and is a valuable partner in our hub development. The centre provides day-care, parental support, healthcare advice, Jobcentre plus sessions, tax credit advice, special needs provision and a childminder network.



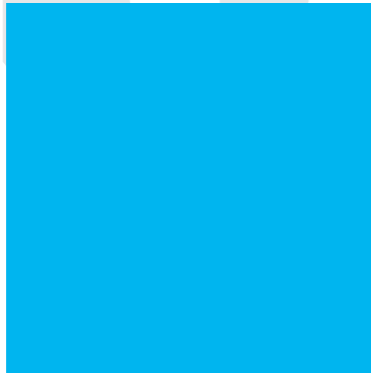


Admissions

Oasis Academy Enfield is a non-selective Academy open to students of all religious faiths and those of no faith.

If you are a parent/carer of a student currently in Year 6 and wish to apply for a place at Oasis Academy Enfield in Year 7 for the following September you need to complete the Common Application Form and return it to Enfield Council.

If you are seeking a place in any other year group or for a Year 7 place other than September you must contact the Academy directly.



How places will be allocated at Oasis Academy Enfield

Where the number of applications for admission is greater than the published admissions number, applications will be considered against the criteria set out below. After the admission of students with Statements of Special Educational Needs where the Academy is named on the Statement, the criteria will be applied in the order in which they are set out below:

1. Children in public care.
2. Children for whom the Academy is appropriate on genuine social or medical grounds. Such applications will be decided by the Academy Council or nominated panel. (Such applications will only be considered under this criterion if they are supported by an attached written statement from a doctor or social worker. This must demonstrate that there is a very specific connection between the child's medical or social need and the Academy).
3. Admission of students whose siblings currently attend the Academy and who will continue to do so on the date of admission. The term "sibling" means a full, half, adopted or fostered brother or sister, or other child living permanently within the same household. The Academy reserves the right to ask for proof of relationship.
4. Admission of students on the basis of proximity to the Academy using straight line measurement from the main entrance of the Academy to the main entrance of the child's home.

Places are allocated on a geographical basis to children who live nearest to the Academy. The distance used to determine how close the child lives to the Academy will be the direct line measurement from the front door of the permanent home address to the main entrance to the Academy site. The child's permanent home address is where he or she normally lives and sleeps and goes to school from. Proof of residence – such as a council tax bill or utility bill – can be requested at any time throughout the admissions process. If false or misleading information is used to gain entry to the Academy, the offer of a place may be withdrawn.

If there are more applicants than there are places remaining within a particular category and where there is no difference in distance from home to school for two or more children, random allocation, carried out by a person or persons unconnected with the Academy, will be used to allocate the final available place(s) and to establish priority on the waiting list.

Facilities

As a new Academy we have excellent facilities in a building designed for 21st Century education. The centrepiece of our Academy is the Agora, a market place where students' work and achievements is showcased. The Academy has many eco-friendly features: solar panels and wind turbines, an eco-construction site and garden area for growing our own food.

We are ICT rich with easy access to the Academy network, both in and out of school. Parents/carers are able to access information on their child's attainment, progress and attendance at any time. We link with other Oasis Academies as they come on stream and with schools from around the world providing a rounded educational experience.

The sports hall and Multi Use Games Area provide excellent sporting facilities. We also access off-site facilities for other sports such as sailing and rock climbing.

The catering facilities are first-class both for students to use and for students to learn. We develop expertise in hospitality and catering and encourage business development in these areas.

Arts and Technology are well supported with the recording studio, indoor and outdoor performance space, engineering workshops and high specification design equipment.



Academy Day

Monday to Wednesday

Lessons one and two	8.45 - 10.25
Break	10.25 - 10.45
Lessons three and four	10.45 - 12.25
Lesson five (or lunch)	12.25 - 1.10
Lesson five (or lunch)	1.10 - 1.55
Learning Family/assembly	1.55 - 2.20
Lessons six and seven	2.20 - 4.00

Thursday and Friday

Lessons one and two	8.45 - 10.25
Break	10.25 - 10.45
Lessons three and four	10.45 - 12.25
Lesson five (or lunch)	12.25 - 1.10
Lesson five (or lunch)	1.10 - 1.55
Lesson six	1.55 - 2.45



Year 7 Curriculum

Students in Year 7 have 33 lessons (50 minutes each) of core learning activities a week. This is divided up as follows:

Humanities	6 lessons
ICT	2 lessons
English	5 lessons
Spanish	2 lessons
Maths	4 lessons
PE	2 lessons
Science	4 lessons
3Es	2 lessons
Immersion days	6 lessons

Opening Minds

Opening Minds is a 21st Century curriculum, preparing students for the challenges of a new millennium. The work focuses on developing the competencies of learning, citizenship, relating to people, managing situations and managing information. These transferable skills are needed by a modern economy and by adopting this approach in all our lessons we prepare all our young people for their future. All the traditional school subjects such as Geography, History, RE, Art, Music, Technology etc are used to deliver the curriculum, with the focus on developing skills and competencies, rather than simply acquiring knowledge.

English, Maths, Science and ICT

English, Maths, Science and ICT follow the Key Stage 3 National Curriculum schemes of work and students are prepared for the Key Stage 3 SATs, to be taken at the end of Year 8 or Year 9.

Immersion Days

On one day a week students study a subject in depth. During each module, all classes study the following for one day a week:- Art, Design Technology, Drama, Enterprise, Food Technology and Music.

Modern Languages

The Modern Language available to all students is Spanish, with the opportunity to study other languages in Year 8 and the 3Es programme. Some students may take additional English courses rather than study a modern language if this better meets their needs.

PE

PE is compulsory for all students.

3Es

3Es is our programme designed to embed, enrich and extend learning.

2 lessons a week are compulsory with additional time available before and after school. A wide range of programmes are on offer such as: learning another language, scouts and guides and running a radio station. Students are able to opt for programmes of their choice in consultation with their parents/carers and Learning Guide.



Uniform

The prospectus contains pictures of students wearing the Oasis Academy Enfield uniform. The compulsory items are listed below.

Girls

Black blazer with Academy badge
White blouse
Black skirt or trousers

Sports kit

Academy polo shirt
Academy sports shirt
Academy shorts
Academy socks

Boys

Black blazer with Academy badge
White shirt and Academy tie
Black trousers

Sports kit

Academy polo shirt
Academy sports shirt
Academy shorts
Academy socks



Special Educational Needs

The Academy's aim is to ensure that all its students achieve their full potential, according to their needs. If a student has special educational needs (SEN), the Academy will take every reasonable step to identify and meet them. Further information on the policy and provision for SEN can be obtained from the Academy.

Students with SEN who do not have statements of special educational needs will be admitted on an equal basis with others in accordance with the Academy's admissions policy (see pages 10 and 11 of the prospectus). Where a student has a statement and the Local Authority is proposing to name the Academy in the statement, the Academy will agree to the student's admission. The only reason for not doing so is if the inclusion of that student would be incompatible with the education of other children and there are no reasonable steps the Academy could take to resolve this. If there is a disagreement between the Academy and the Local Authority on the placement of a student, there is a voluntary dispute resolution service backed up by the Secretary of State's power to intervene. In the last resort parents/carers can appeal to the SEN and Disability Tribunal.

Appeals and complaints

Information on admissions appeals and making a formal complaint is available from the main Academy office.



Admissions

How places will be allocated at Oasis Academy Enfield

Where the number of applications for admission is greater than the published admissions number, applications will be considered against the criteria set out below. After the admission of students with Statements of Special Educational Needs where the Academy is named on the Statement, the criteria will be applied in the order in which they are set out below:

1. Children in public care.
2. Children for whom the Academy is appropriate on genuine social or medical grounds. Such applications will be decided by the Academy Council or nominated panel. (Such applications will only be considered under this criterion if they are supported by an attached written statement from a doctor or social worker. This must demonstrate that there is a very specific connection between the child's medical or social need and the Academy).
3. Admission of students whose siblings currently attend the Academy and who will continue to do so on the date of admission. The term "sibling" means a full, half, adopted or fostered brother or sister, or other child living permanently within the same household. The Academy reserves the right to ask for proof of relationship.

4. Admission of students on the basis of proximity to the Academy using straight line measurement from the main entrance of the Academy to the main entrance of the child's home.

Places are allocated on a geographical basis to children who live nearest to the Academy. The distance used to determine how close the child lives to the Academy will be the direct line measurement from the front door of the permanent home address to the main entrance to the Academy site. The child's permanent home address is where he or she normally lives and sleeps and goes to school from. Proof of residence – such as a council tax bill or utility bill – can be requested at any time throughout the admissions process. If false or misleading information is used to gain entry to the Academy, the offer of a place may be withdrawn.

If there are more applicants than there are places remaining within a particular category and where there is no difference in distance from home to school for two or more children, random allocation, carried out by a person or persons unconnected with the Academy, will be used to allocate the final available place(s) and to establish priority on the waiting list.

